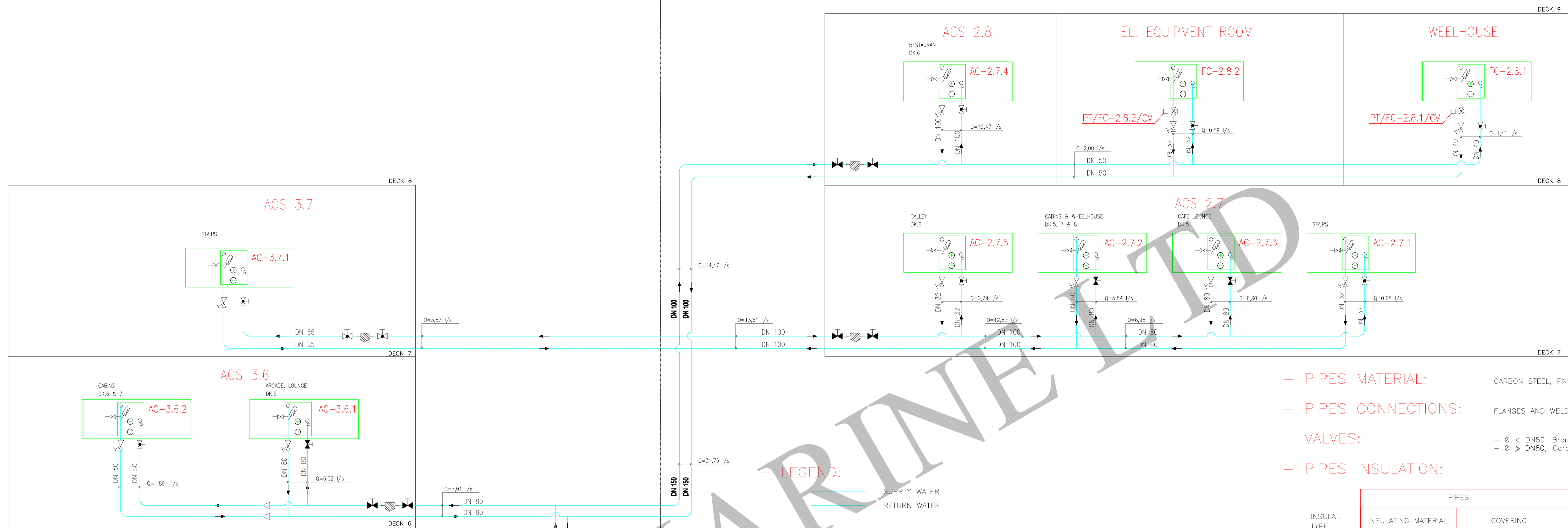


MFZ 3

MFZ 2

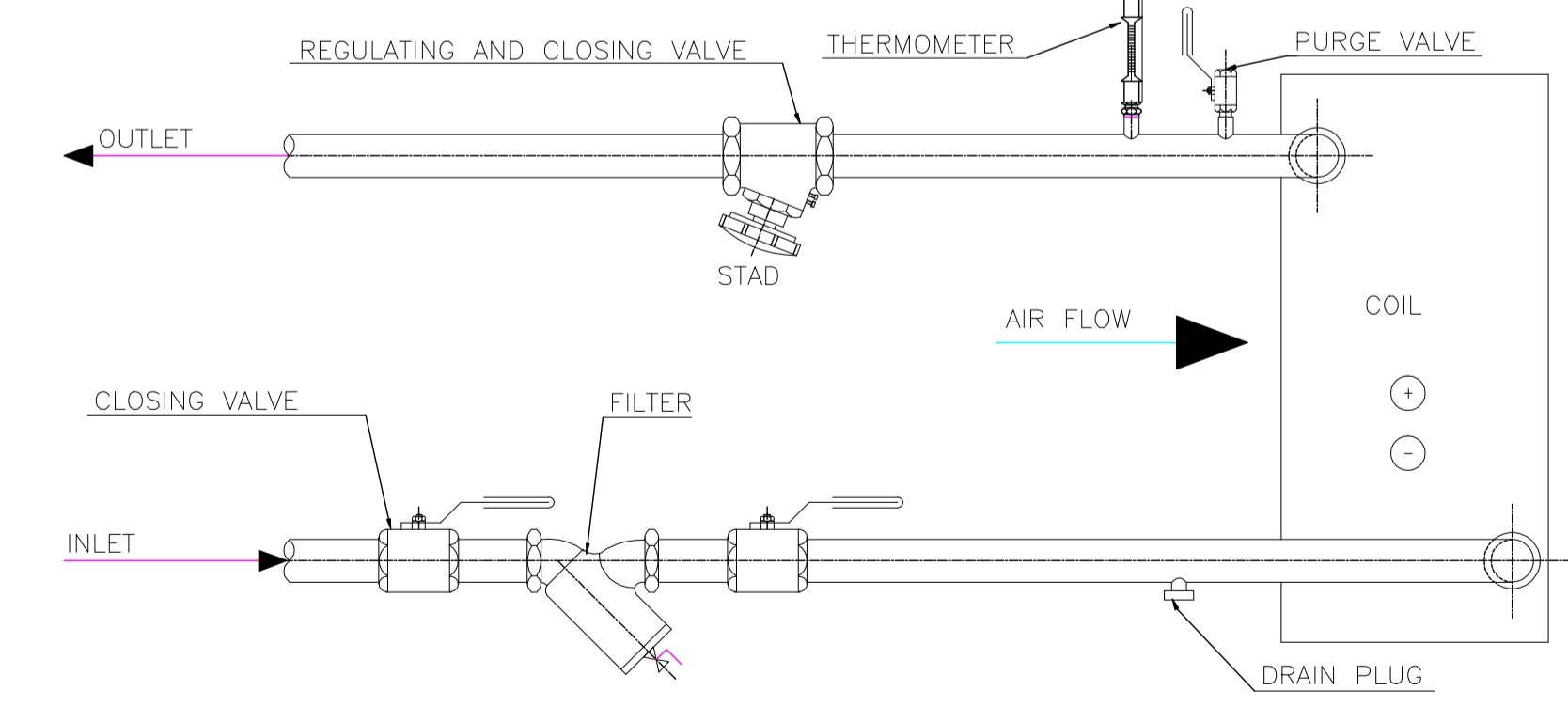
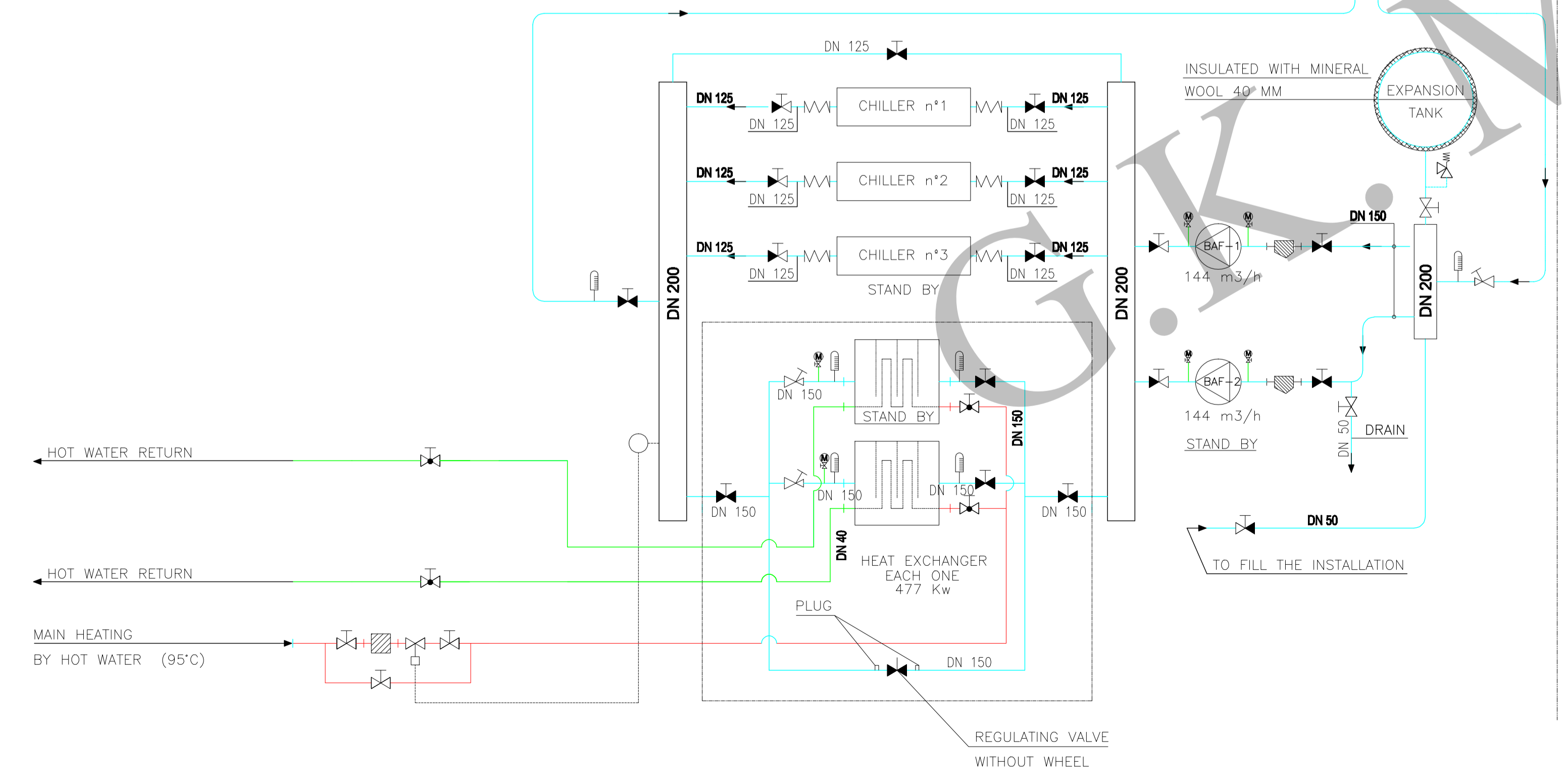


- PIPES MATERIAL: CARBON STEEL, PN 16
- PIPES CONNECTIONS: FLANGES AND WELDED SLEEVE
- VALVES:
 - Ø < DN80, Bronze body and fittings, Globe valves
 - Ø > DN80, Carbon steel body and bronze disc, Butterfly valves
- PIPES INSULATION:

LEGEND:
 SUPPLY WATER
 RETURN WATER

DN	BUTTERFLY VALVE	GLOBE VALVE	REGULATING & CLOSING VALVE	PURGE VALVE	COMBINED STOP & CHECK VALVE	FILTER	COOLING WATER THERMOMETER
15		WP-100-V	WP-200-V	WP-300-V	WP-400-V	WP-400-F	WP-100-T
20		WP-101-V	WP-201-V	WP-300-V	WP-401-V	WP-401-F	WP-101-T
25		WP-102-V	WP-202-V	WP-300-V	WP-402-V	WP-402-F	WP-102-T
32		WP-103-V	WP-203-V	WP-300-V	WP-403-V	WP-403-F	WP-103-T
40		WP-104-V	WP-204-V	WP-300-V	WP-404-V	WP-404-F	WP-104-T
50		WP-105-V	WP-205-V	WP-300-V	WP-405-V	WP-405-F	WP-105-T
65		WP-106-V	WP-206-V	WP-300-V	WP-406-V	WP-406-F	WP-106-T
80	WP-001-V	WP-207-V	WP-300-V	WP-407-V	WP-407-F	WP-107-T	
100	WP-002-V	WP-208-V	WP-300-V	WP-408-V	WP-408-F	WP-108-T	
125	WP-003-V	WP-209-V	WP-300-V	WP-409-V	WP-409-F	WP-109-T	
150	WP-004-V	WP-210-V	WP-300-V	WP-410-V	WP-410-F	WP-110-T	

INSULAT. TYPE	PIPES		FLANGES JOINTS, VALVES AND FITTINGS	
	INSULATING MATERIAL	COVERING	INSULATING MATERIAL	COVERING
THERMAL (HEATING WATER PIPES)	Fiberglass segments, density 60 kg/m ³ , thickness as follows: - Ø < DN32, 20mm - DN32 Ø DN80, 25mm < < - Ø DN80, 30mm >	Glass fabric lagging of 230 g/m ² , with overlapped glued joints	Rockwool pad of thickness same as blocks of pipings	Glass fabric lagging of 450 g/m ²
CONDENSATE (COOLING WATER PIPES)	Wrapping of pipes with double layer of 0,12 glass fabric.	—	—	—



TYPICAL DETAIL COIL CONNECTIONS

No.	Date	Aut.	Revision
F	17/05/04	JD	3-way valve added for fan coil FC-2.8.2, acc. P&I Diagrams
G	10/09/04	PHT	Notes added

Unit:	Shell no: C - 399	Scale:	2000
Comments:	Project: HVAC	Date:	8/11/02
Title:	VERTICAL DIAGRAM	Author:	JD
Type:	WATER PIPING LAYOUT	Check:	20/11/02
System:	PREHEATED/CHILLED	Drawing no:	399-40-02
This drawing must be read in conjunction with related drawings.			Rev F.DWG